

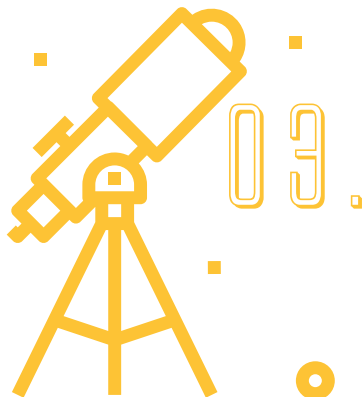
SPACE WALK

The title 'SPACE WALK' is written in a large, outlined, sans-serif font. To the right of the text is a line-art illustration of an astronaut in a full space suit. The background is decorated with various space-related icons: stars, a planet with rings, and a rocket.

Going for a spacewalk can be dangerous, which is why you are supported by a crew inside the space station. This crew will help walk you through procedures or settings for the task at hand. In this strategy, students work through a problem or create something together as a team.

01. Get students into groups of 4-5. Each group is called a crew.

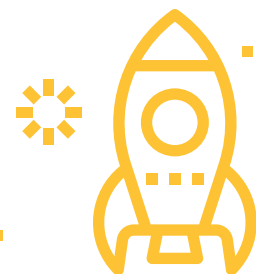
02. Provide a specific problem or task to each crew. This is theirs to work on together - no one else is provided with the same problem or task.



03. Each person in the crew will take a spacewalk for one portion of the problem or task.

04. When it's their turn to take a spacewalk, each individual will work on their portion or task alone. The crew can provide support or find resources that may help the spacewalker to work on their portion. The spacewalker must finish their portion before the next portion is complete.

05. Once everyone has had a chance to take a spacewalk, the task or problem has been completed or solved. The crew can then reflect on how they could have helped each other better or what they would do differently next time.



Try using this with creating a piece of artwork, a musical composition or a piece of choreography.