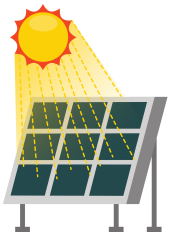


Name: _____ **Date:** _____

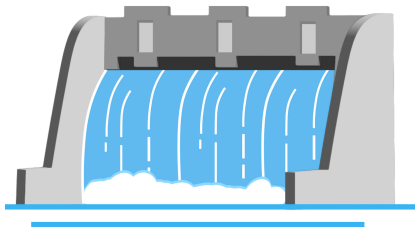
Renewable Energy



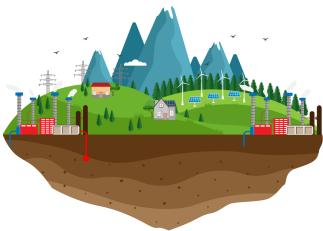
Solar energy is produced from the sun, using solar panels to collect the sun's energy.



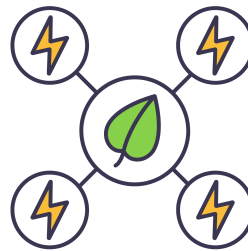
Wind energy is generated by wind turbines that convert the kinetic energy of wind into electricity.



Hydropower is produced from the movement of water, typically by damming rivers and using the flow to turn turbines, to produce electricity.



Geothermal energy is harnessed from the heat stored beneath the Earth's surface, which can be used for electricity generation and heating.



Biomass energy is derived from organic materials, such as plant and animal waste. It can be burned directly for heat.

Renewable energy has many advantages, such as, reduced pollution to air and water, lower impact on natural environment and habitats, supplies are inexhaustible.

Name: _____ **Date:** _____

Non-renewable Energy



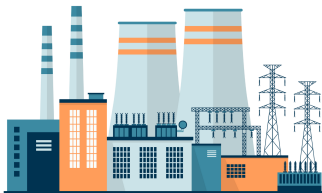
Coal is chunks of black rock that come from the ground. Burning coal makes electricity, but it also runs out and can't be replaced quickly.



Oil is used for transportation, heating and generating electricity. Once we use up the oil, we can't get more right away.



Natural Gas is the type of gas used to power a cooking stove. Natural gas comes from under the earth, and when it is gone, it's gone.



Nuclear energy comes from breaking apart tiny atoms to make a lot of energy. But, the special materials that are needed, like uranium, are limited.



Environmental PSA Script Planning

Name: _____ **Date:** _____

You will be making a public service announcement (PSA) about energy! A PSA is a short message that teaches people something important or gives helpful information. You might see PSAs on TV, hear them on the radio, or find them in newspapers. It should be 30-60 seconds long.

Title:

Key Message: What is the difference between renewable and non-renewable energy sources?:

Facts/Statistics: How do renewable and non-renewable energy sources affect the earth and our environment?:

Facts/Statistics: Which types of energy sources are better for the environment, and why?:

Call to Action: How can you help protect the environment by conserving energy?:

Use these answers to help develop your PSA script on the back. Be sure your script has a beginning, middle, and end. Be sure to introduce your main point about this topic, and give 3-4 supporting details. Close with what you and your audience can do to help.